

*e	dimensions	
Ø (mm <sup>2</sup> )	A (mm)	B (mm)
2.5	54.4	17.75
4.0	56.4	18.75

**LC3-JT**  
**LC4-JT**

Photovoltaic junction boxes for thin film modules<sup>1</sup>, single-pole with connecting cables and connectors (alternatively LC3® or LC4®), for ribbons fed **through the back plane** of the module, mounting with self-adhesive pad or by means of glue<sup>2</sup>, for potting<sup>2</sup>, cover for automatic assembly

- 1. Temperature range**
  - 40 °C/+85 °C (IEC)
  - 40 °C/+90 °C (UL)
  - (+155 °C upper limit temperature)
- 2. Materials**
  - Housing/cover: m-PET GF, 5VA according to UL 94
  - Contact: XCrNi, tinned
  - Crimp bushing: Cu, tinned
  - Adhesive pad: upon request
- 3. Mechanical data**
  - Mating with: photovoltaic connectors LC3/LC4
  - Further data: see LC3-AM/LC4-CP 3.../LC4-AM
  - Protection degree (junction box)<sup>3</sup>: IP 65
  - Connectable contact ribbons**
    - Width: ≤ 6.0 mm
    - Thickness: ≤ 0.1 mm
  - Other dimensions upon request
  - Connected conductor**
    - Photovoltaic cable, double-insulated, technical Data upon request
    - Section alternatively: 2.5 mm<sup>2</sup> (AWG 14) or 4.0 mm<sup>2</sup> (AWG 12)
- 4. Electrical data (at T<sub>amb</sub> 20 °C)**
  - Contact resistance: ≤ 1.5 mΩ
  - Rated current: 10 A at T<sub>amb</sub> 85 °C
  - Rated voltage<sup>4</sup>: 1000 V DC (IEC)/600 V DC (UL)
  - Modul working voltage: 100 V DC
  - Overvoltage category<sup>4</sup>: III (8 kV)
  - Material group<sup>4</sup>: IIIa (IEC)/2 (UL) (CTI ≥ 250)
  - Creepage distance/clearance between live parts and touchable surfaces: 21.8 mm
  - Pollution degree<sup>4</sup>: 3
  - Protective class: II
  - Insulation resistance: > 10 GΩ

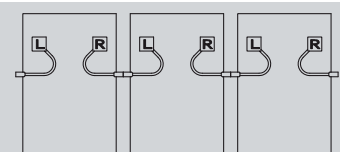
<sup>1</sup> according to application class A of IEC 61730-1/UL 1703  
<sup>2</sup> appropriate materials upon request  
<sup>3</sup> according to IEC 60529/DIN EN 60529  
<sup>4</sup> according to DIN EN 60664/IEC 60664 resp. according to ANSI/UL 746A



- \*a option with self-adhesive pad
- \*b spacer option for fixation by means of glue
- \*c potting hole
- \*d deaerator hole
- \*e connecting cables: section 2.5 mm<sup>2</sup> (AWG 14) or 4.0 mm<sup>2</sup> (AWG 12)
- \*f left connector: LC3-AM, LC4-CP 3... or LC4-AM
- \*g right connector: LC3-AM, LC4-CP 3... or LC4-AM
- \*h schematic diagram of bottom side with ribbon feed-through
- \*i opening of bottom side for ribbon feed-through
- \*j direction of cable departure
- \*k outline contour of junction box

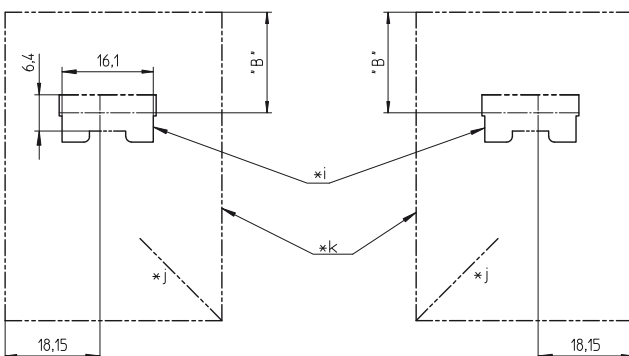
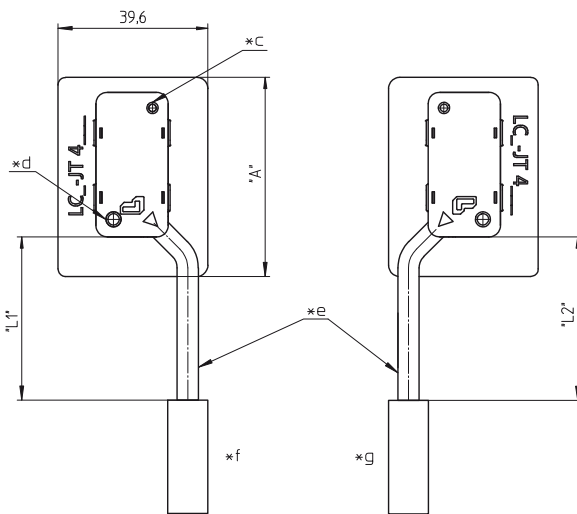
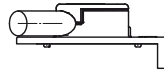
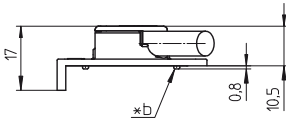
**Thinfilm modules:**  
**Wiring diagram**

Single pole junction boxes, for ribbons fed through the back plane of the module


**Designation**

- LC3-JT** details upon request  
**LC4-JT** details upon request





*e	dimensions	
Ø (mm <sup>2</sup> )	A (mm)	B (mm)
2.5	52.7	16.05
4.0	54.7	17.05

**LC3-JT**  
**LC4-JT**

Photovoltaic junction boxes for thin film modules<sup>1</sup>, single-pole with connecting cables and connectors (alternatively LC3® or LC4®), for ribbons fed **over the edge** of the module, mounting by means of glue<sup>2</sup>, for potting<sup>2</sup>, cover for automatic assembly

- Temperature range**
  - 40 °C/+85 °C (IEC)
  - 40 °C/+90 °C (UL)
  - (+155 °C upper limit temperature)
- Materials**
  - UV-resistant
  - Housing/cover: m-PET GF, 5VA according to UL 94
  - Contact: XCrNi, tinned
  - Crimp bushing: Cu, tinned
- Mechanical Data**
  - Mating with: photovoltaic connectors LC3/LC4
  - Further Data: see LC3-AM/LC4-CP 3.../LC4-AM
  - Protection degree (junction box)<sup>3</sup>: IP 65
  - Connectable contact ribbons**
    - Width: ≤ 6.0 mm
    - Thickness: ≤ 0.1 mm
    - Other dimensions upon request
  - Connected conductor**
    - Photovoltaic cable, double-insulated, technical Data upon request
    - Section alternatively: 2.5 mm<sup>2</sup> (AWG 14) or 4.0 mm<sup>2</sup> (AWG 12)
- Electrical data** (at T<sub>amb</sub> 20 °C)
  - Contact resistance: ≤ 1.5 mΩ
  - Rated current: 10 A at T<sub>amb</sub> 85 °C
  - Rated voltage<sup>4</sup>: 1000 V DC (IEC)/600 V DC (UL)
  - Modul working voltage: 100 V DC
  - Overtoltage category<sup>4</sup>: III (8 kV)
  - Material group<sup>4</sup>: IIIa (IEC)/2 (UL) (CTI ≥ 250)
  - Creepage distance/clearance between live parts and touchable surfaces: 21.8 mm
  - Pollution degree<sup>4</sup>: 3
  - Protective class: II
  - Insulation resistance: > 10 GΩ

<sup>1</sup> according to application class A of IEC 61730-1/UL 1703

<sup>2</sup> appropriate materials upon request

<sup>3</sup> according to IEC 60529/DIN EN 60529

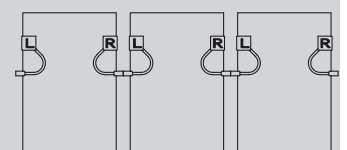
<sup>4</sup> according to DIN EN 60664/IEC 60664 resp. according to ANSI/UL 746A



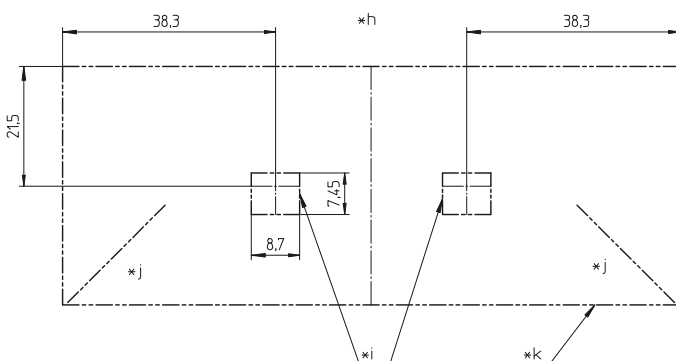
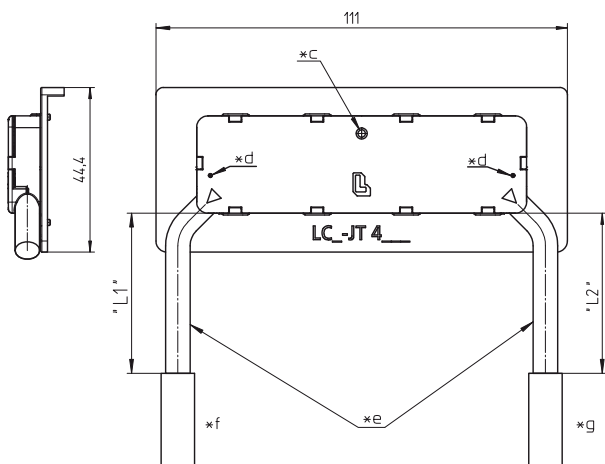
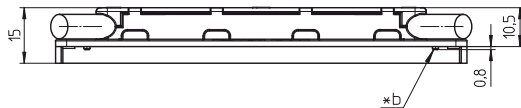
- \*b spacer option for fixation by means of glue
- \*c potting hole
- \*d deaerator hole
- \*e connecting cables: section 2.5 mm<sup>2</sup> (AWG 14) or 4.0 mm<sup>2</sup> (AWG 12)
- \*f left connector: LC3-AM, LC4-CP 3... or LC4-AM
- \*g right connector: LC3-AM, LC4-CP 3... or LC4-AM
- \*h schematic diagram of bottom side with ribbon feed-through
- \*i opening of bottom side for ribbon feed-through
- \*j direction of cable departure
- \*k outline contour of junction box

**Thinfilm modules:**  
**Wiring diagram**

Single pole junction boxes, for ribbons fed over the edge of the module


**Designation**

<b>LC3-JT</b>	details upon request
<b>LC4-JT</b>	details upon request


**LC3-JT**  
**LC4-JT**

Photovoltaic junction boxes for thin film modules<sup>1</sup>, two-pole with connecting cables and connectors (alternatively LC3® or LC4®), with or without diode, for ribbons fed **over the edge** of the module, mounting by means of glue<sup>2</sup>, for potting<sup>2</sup>, cover for automatic assembly

<b>1. Temperature range</b>	-40 °C/+85 °C (IEC) -40 °C/+90 °C (UL) (+155 °C upper limit temperature)
<b>2. Materials</b>	UV-resistant
Housing/cover	m-PET GF, 5VA according to UL 94
Contact	XCrNi, tinned
Crimp bushing	Cu, tinned
<b>3. Mechanical Data</b>	
Mating with	photovoltaic connectors LC3/LC4
Further Data	see LC3-AM/LC4-CP 3.../LC4-AM
Protection degree (junction box) <sup>3</sup>	IP 65
<b>Connectable contact ribbons</b>	
Width	≤ 6.0 mm
Thickness	≤ 0.1 mm
Other dimensions upon request	
<b>Connected conductor</b>	
Photovoltaic cable, double-insulated, technical Data upon request	
Section alternatively	2.5 mm <sup>2</sup> (AWG 14) or 4.0 mm <sup>2</sup> (AWG 12)
<b>4. Electrical data (at T<sub>amb</sub> 20 °C)</b>	
Contact resistance	≤ 1.5 mΩ
Rated current (IEC)	various diodes available, value depending on type of diode and diode bypass test, details upon request
Rated current (UL)	10 A DC without diode, details upon request
Rated voltage <sup>4</sup>	1000 V DC (IEC)/600 V DC (UL)
Modul working voltage	100 V DC
Overvoltage category <sup>4</sup>	III (8 kV)
Material group <sup>4</sup>	IIIa (IEC)/2 (UL) (CTI ≥ 250)
Creepage distance/clearance between	
live parts	15.9 mm
live parts and touchable surfaces	20.0 mm
Pollution degree <sup>4</sup>	3
Protective class	II
Insulation resistance	> 10 GΩ

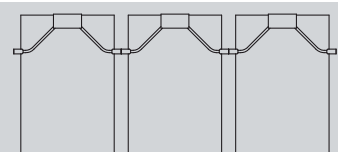
- <sup>1</sup> according to application class A of IEC 61730-1/UL 1703  
<sup>2</sup> appropriate materials upon request  
<sup>3</sup> according to IEC 60529/DIN EN 60529  
<sup>4</sup> according to DIN EN 60664/IEC 60664 resp. according to ANSI/UL 746A

Approvals under preparation

- \*b spacer option for fixation by means of glue  
 \*c potting hole  
 \*d deaerator hole  
 \*e connecting cables: section 2.5 mm<sup>2</sup> (AWG 14) or 4.0 mm<sup>2</sup> (AWG 12)  
 \*f left connector: LC3-AM, LC4-CP 3... or LC4-AM  
 \*g right connector: LC3-AM, LC4-CP 3... or LC4-AM  
 \*h schematic diagram of bottom side with ribbon feed-through  
 \*i opening of bottom side for ribbon feed-through  
 \*j direction of cable departure  
 \*k outline contour of junction box

**Thinfilm modules:**  
**Wiring diagram**

Two-pole junction boxes, for ribbons fed through the back plane of the module


**Designation**

<b>LC3-JT</b>	details upon request
<b>LC4-JT</b>	details upon request